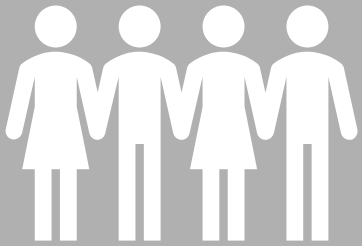


BE WHO YOU ARE!



CHRIST CHURCH
HUNTINGDON



Wives and Husbands

EPHESIANS 5:21-33

However each one of you
also must love his wife as
he loves himself, and the
wife must respect her
husband.

Ephesians 5v33

Introduction...

... controversial, Christ-centred



, crucial

CHRIST CHURCH
HUNTINGDON



EPHESIANS 5:21-33



BE WHO YOU ARE!

Introduction...

... controversial, Christ-centred , crucial



Wives... (v22-24)

...submit

Husbands... (v25-33)

...sacrifice



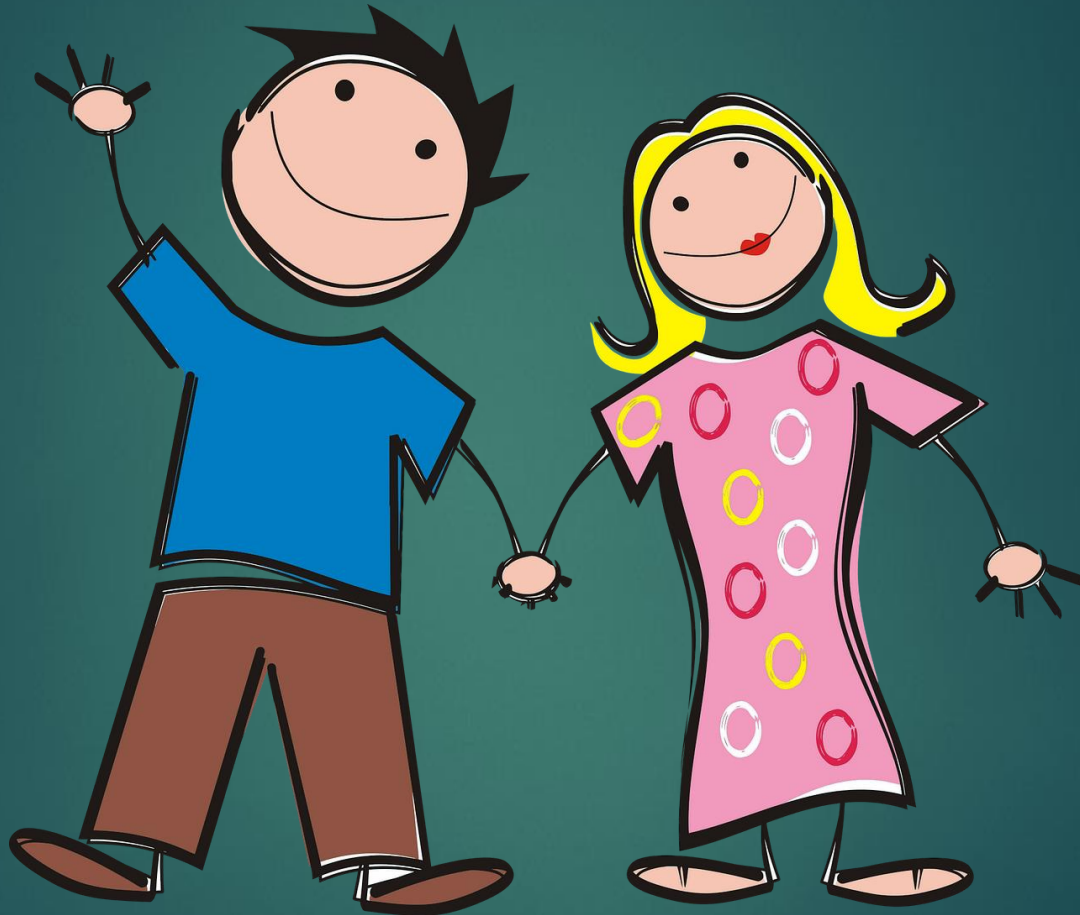
EPHESIANS 5:21-33

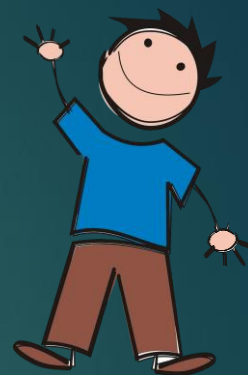




BE WHO YOU ARE!

When Harry



met Sally





...submit  ...sacrifice 



...submit  ...sacrifice 



Introduction...

... controversial, Christ-centred , crucial



Wives... (v22-24)



...submit with Christian respect

What might it look like for Sally?



Husbands... (v25-33)



... sacrifice with Christlike love

What might it look like for Harry?